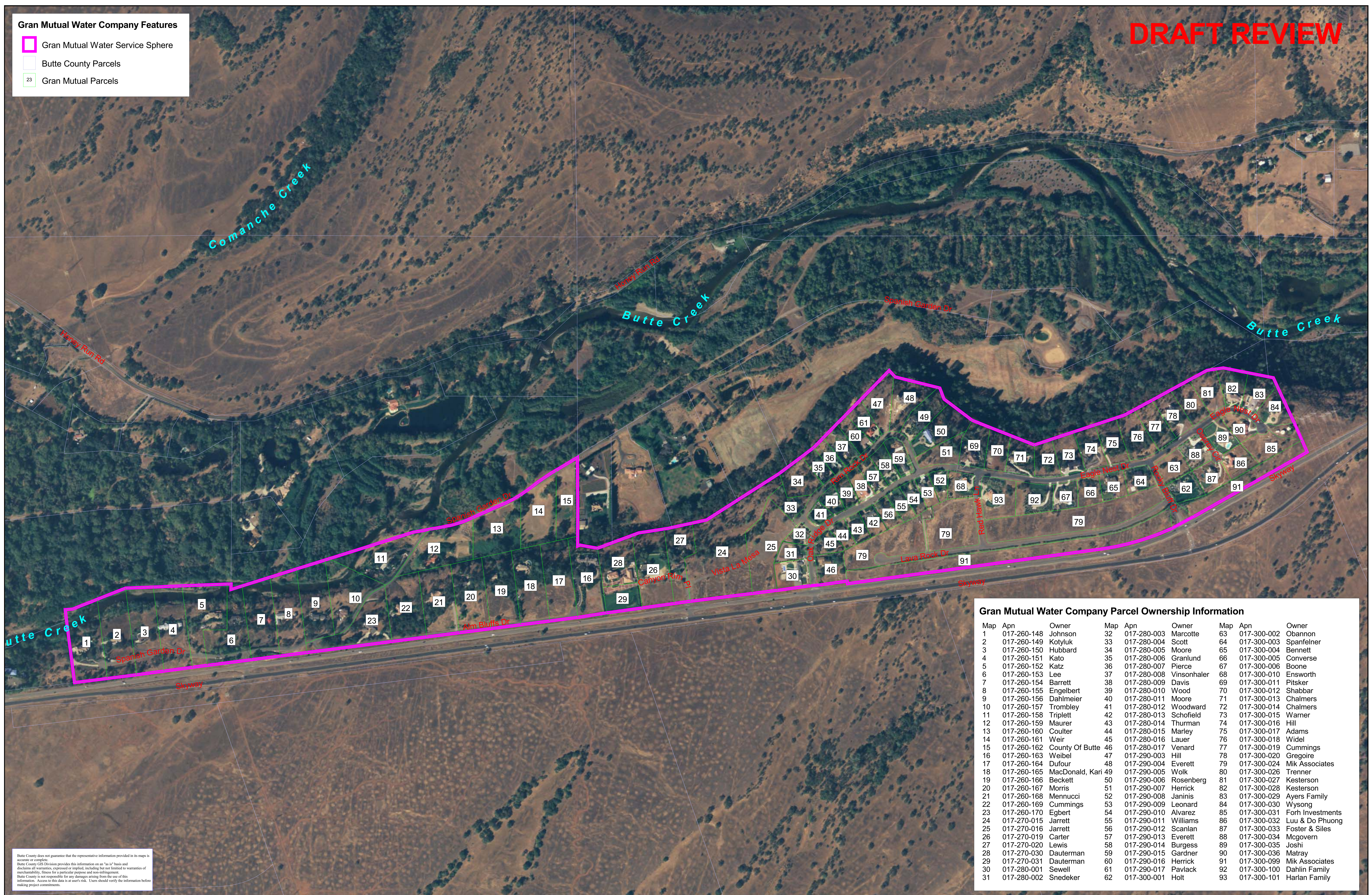


DRAFT REVIEW

Gran Mutual Water Company Features

- Gran Mutual Water Service Sphere
- Butte County Parcels
- Gran Mutual Parcels



Gran Mutual Water Company Parcel Ownership Information

Map	Apn	Owner	Map	Apn	Owner	Map	Apn	Owner
1	017-260-148	Johnson	32	017-280-003	Marcotte	63	017-300-002	Obannon
2	017-260-149	Kotlyuk	33	017-280-004	Scott	64	017-300-003	Spanfeller
3	017-260-150	Hubbard	34	017-280-005	Moore	65	017-300-004	Bennett
4	017-260-151	Kato	35	017-280-006	Granlund	66	017-300-005	Converse
5	017-260-152	Katz	36	017-280-007	Pierce	67	017-300-006	Boone
6	017-260-153	Lee	37	017-280-008	Vinsonhaler	68	017-300-010	Ensworth
7	017-260-154	Barrett	38	017-280-009	Davis	69	017-300-011	Pitsker
8	017-260-155	Engelbert	39	017-280-010	Wood	70	017-300-012	Shabbar
9	017-260-156	Dahlmeier	40	017-280-011	Moore	71	017-300-013	Chalmers
10	017-260-157	Trombley	41	017-280-012	Woodward	72	017-300-014	Chalmers
11	017-260-158	Triplett	42	017-280-013	Schofield	73	017-300-015	Warner
12	017-260-159	Maurer	43	017-280-014	Thurman	74	017-300-016	Hill
13	017-260-160	Coulter	44	017-280-015	Marley	75	017-300-017	Adams
14	017-260-161	Weir	45	017-280-016	Lauer	76	017-300-018	Widel
15	017-260-162	County Of Butte	46	017-280-017	Venard	77	017-300-019	Cummings
16	017-260-163	Weibel	47	017-290-003	Hill	78	017-300-020	Gregoire
17	017-260-164	Dufour	48	017-290-004	Everett	79	017-300-024	Mik Associates
18	017-260-165	MacDonald, Kari	49	017-290-005	Wolk	80	017-300-026	Trenner
19	017-260-166	Beckett	50	017-290-006	Rosenberg	81	017-300-027	Kesterson
20	017-260-167	Morris	51	017-290-007	Herrick	82	017-300-028	Kesterson
21	017-260-168	Mennucci	52	017-290-008	Janinis	83	017-300-029	Ayers Family
22	017-260-169	Cummings	53	017-290-009	Leonard	84	017-300-030	Wysong
23	017-260-170	Egbert	54	017-290-010	Alvarez	85	017-300-031	Forh Investments
24	017-270-015	Jarrett	55	017-290-011	Williams	86	017-300-032	Luu & Do Phuong
25	017-270-016	Jarrett	56	017-290-012	Scanlan	87	017-300-033	Foster & Siles
26	017-270-019	Carter	57	017-290-013	Everett	88	017-300-034	McGovern
27	017-270-020	Lewis	58	017-290-014	Burgess	89	017-300-035	Joshi
28	017-270-030	Dauterman	59	017-290-015	Gardner	90	017-300-036	Matray
29	017-270-031	Dauterman	60	017-290-016	Herrick	91	017-300-099	Mik Associates
30	017-280-001	Sewell	61	017-290-017	Paviack	92	017-300-100	Dahlin Family
31	017-280-002	Snedeker	62	017-300-001	Holt	93	017-300-101	Harlan Family

Butte County does not guarantee that the representative information provided in its maps is accurate or complete. Butte County GIS Division provides this information on an "as is" basis and disclaims all warranties, expressed or implied, including but not limited to warranties of merchantability, fitness for a particular purpose and non-infringement. Butte County is not responsible for any damages arising from the use of this information. Access to this data is at user's risk. Users should verify the information before making project commitments.

GRAN MUTUAL WATER COMPANY

Gran Mutual Water Comapny Service Sphere

Gran Mutual Water Company
 500 0 500 1000 Feet

Action:	Date:	Res.:	Agent:
---------	-------	-------	--------

Data: Butte County, LAFCO, GMWC
 C:\projects\lafco_projects\lafco_irrigation_districts\lafco_gran_mutual_ws\gran_mutual_water01.apr.
 Updated: 04/30/06